



WELDON HOMES

YOUR TRULY INDEPENDENT ESTATE AGENT



Four Bedroom
Semi-Detached
Family Home

TO LET
£1,750 pcm

Gregory Way, Wigston



PROPERTY OVERVIEW

Nestled within the new Barratt Homes residential development in Wigston, this beautifully presented 4-bedroom semi-detached property offers a fantastic unfurnished rental opportunity. Boasting a single garage, off-street parking, a private rear garden, and a prime location, this home is perfect for families or professionals seeking modern living and convenience.

On the ground floor, you will find a spacious living room with patio doors to the private rear garden, a well-equipped kitchen with built-in appliances, and a convenient downstairs W/C.

The first floor comprises two double bedrooms (one with a built-in wardrobe), a single third bedroom, and a modern family bathroom with a three-piece suite. The second floor features a large master bedroom with an en suite, built-in dressing room, and Velux windows.

The property boasts a well-maintained private rear garden and a driveway leading to a single garage. Situated in the sought-after Barratt Homes development in Wigston, it offers easy access to local amenities, schools, and transport links.

HOUSE FEATURES



4 Bedrooms



2 Bathroom



Stylish Kitchen



Living-Room



Driveway and Garage



Garden

CONTACT US NOW

sales@weldonhomes.co.uk

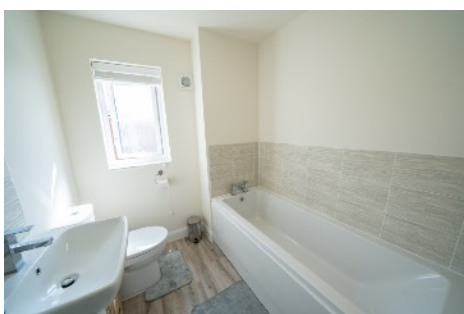
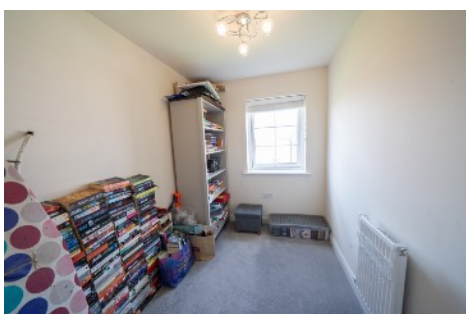
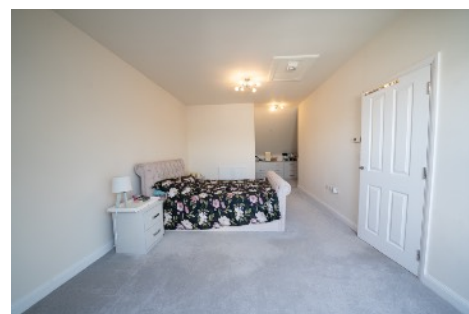
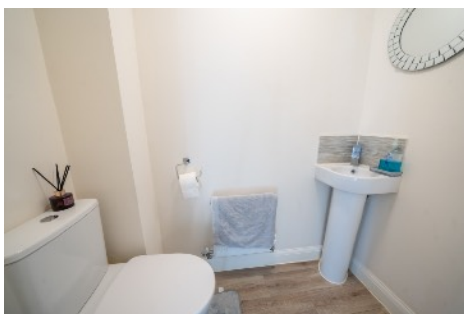
07720 311451

www.weldonhomes.co.uk



WELDON HOMES

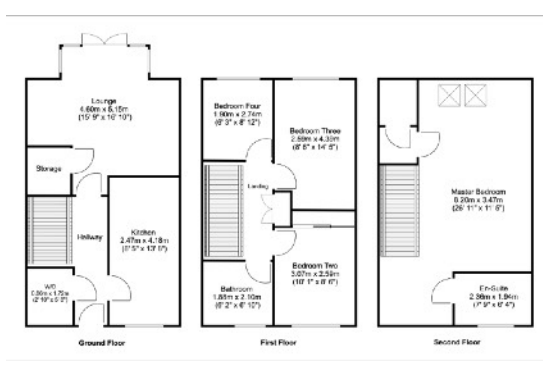
YOUR TRULY INDEPENDENT ESTATE AGENT



LOCATION



FLOORPLAN



EPC

Score	Energy rating	Current	Potential
92+	A		95 A
81-91	B	85 B	
69-80	C		
55-68	D		
39-54	E		
21-38	F		
1-20	G		

CONTACT US NOW

sales@weldonhomes.co.uk

07720 311451

www.weldonhomes.co.uk