



WELDON HOMES

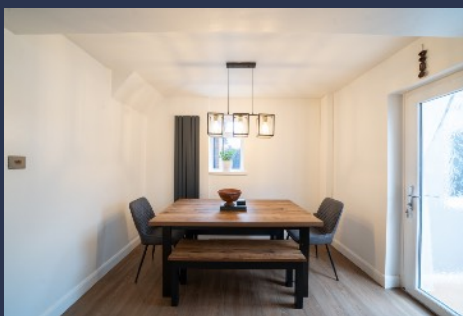
YOUR TRULY INDEPENDENT ESTATE AGENT



Three Bedroom
Semi-Detached
Family Home

FOR SALE
£295,000

Renfrew Road, Netherhall



PROPERTY OVERVIEW

Welcome to Renfrew Road, a flawlessly presented three-bedroom semi-detached property in Netherhall, Leicester.

Featuring a large double garage, ample parking, and workspace potential. Inside, discover a meticulously maintained interior with modern decor, a sleek kitchen with dining space, and a garden room for extra living area. Upstairs, three bedrooms offer comfort, with the master benefiting from a mirrored wardrobe. A modern bathroom adds luxury.

Outside, enjoy a paved, decked rear garden and charming front garden.

HOUSE FEATURES



3 Bedrooms



1 Bathroom



Stylish Kitchen



Living-Room



Double Garage



Garden

CONTACT US NOW



sales@weldonhomes.co.uk



07720 311451



www.weldonhomes.co.uk

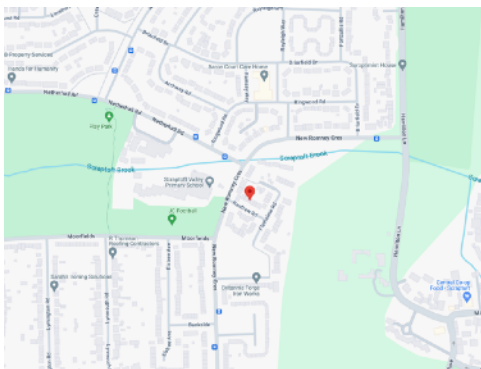


WELDON HOMES

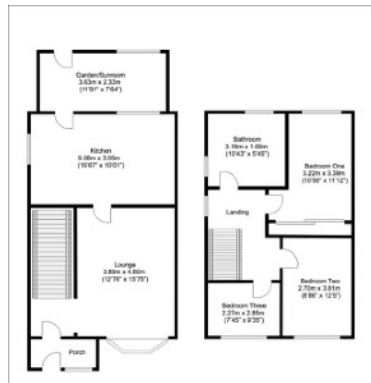
YOUR TRULY INDEPENDENT ESTATE AGENT



LOCATION



FLOORPLAN



EPC

Score	Energy rating	Current	Potential
92+	A		
81-91	B		81 B
69-80	C		
55-68	D	67 D	
39-54	E		
21-38	F		
1-20	G		

CONTACT US NOW

sales@weldonhomes.co.uk

07720 311451

www.weldonhomes.co.uk

—
**LET'S HELP
YOUR
PROPERTY
STAND OUT**



**BRITISH
PROPERTY
AWARDS**

2024



GOLD WINNER

**ESTATE AGENT
IN WIGSTON**