



WELDON HOMES

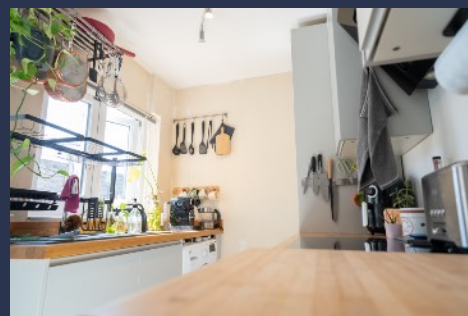
YOUR TRULY INDEPENDENT ESTATE AGENT



Two Bedroom
Period
Mid-Terrace

FOR SALE
Guide Price £190,000

High Street, Whetstone



PROPERTY OVERVIEW

Nestled in the heart of Whetstone, Leicester, this charming two-bedroom period mid-terrace home perfectly blends traditional features with modern living, making it ideal for first-time buyers or those seeking warmth, style, and convenience.

The inviting living area, with a bay window and functional open fire, flows into a bright dining room with patio doors leading to a private garden. The modern kitchen is well-equipped with integrated appliances and sleek finishes. Upstairs, you will find two spacious double bedrooms, with the first offering direct access to the modern bathroom. The private rear garden features elegant porcelain tiles, a growing area, and an outhouse with additional storage and an outdoor W/C.

This delightful home combines classic charm with contemporary amenities, offering the best of both worlds. Do not miss the opportunity to make it your new home.

HOUSE FEATURES



2 Bedrooms



1 Bathroom



Kitchen



Living-Room



Garden

CONTACT US NOW

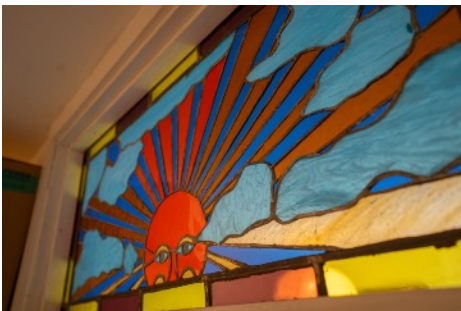
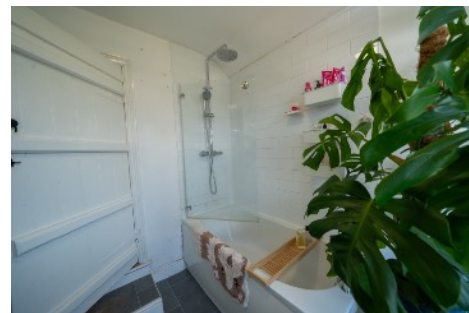
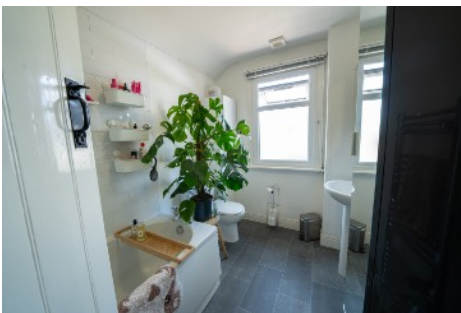
 sales@weldonhomes.co.uk

 07720 311451

 www.weldonhomes.co.uk



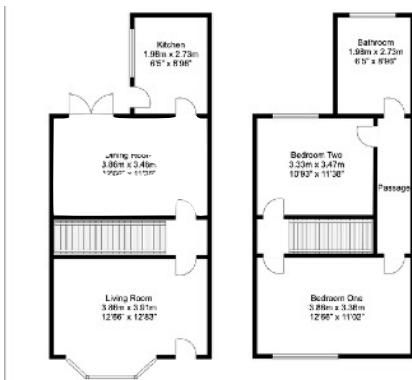
WELDON HOMES
YOUR TRULY INDEPENDENT ESTATE AGENT



LOCATION



FLOORPLAN



EPC

Score	Energy rating	Current	Potential
92+	A		
81-91	B		87 B
69-80	C		
55-68	D		
39-54	E	40 E	
21-38	F		
1-20	G		

CONTACT US NOW

sales@weldonhomes.co.uk

07720 311451

www.weldonhomes.co.uk