



WELDON HOMES

YOUR TRULY INDEPENDENT ESTATE AGENT



Three Bedroom
Semi-Detached
Family Home

FOR SALE
£285,000

Mayfield Drive, Wigston



PROPERTY OVERVIEW

This charming three-bedroom semi-detached home is located on the highly desirable Mayfield Drive in Wigston, offering the perfect combination of comfort, practicality, and potential.

The property boasts generously proportioned living spaces, ideal for both everyday family life and entertaining friends and relatives. The lounge and dining areas are bright and welcoming, with plenty of natural light, while the kitchen provides a functional space with scope to personalise.

Outside, the property benefits from a driveway and a detached single garage with an electric door, offering both convenience and secure parking.

Lovingly maintained by the current owners, the home is ready to move into, yet still offers buyers the chance to add their own modern touches and personal style, creating a truly bespoke family home. With excellent local schools, shops, and parks all close by, this is a fantastic opportunity to settle in one of Wigston's sought-after locations.

HOUSE FEATURES



3 Bedrooms



1 Bathroom



Kitchen



Living-Room



Garage



Garden

CONTACT US NOW

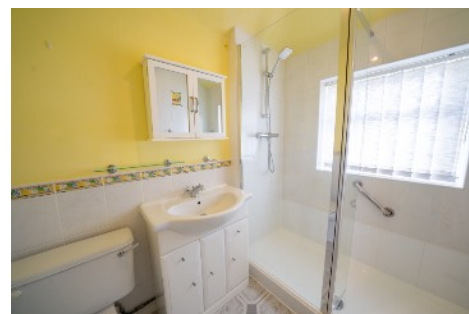
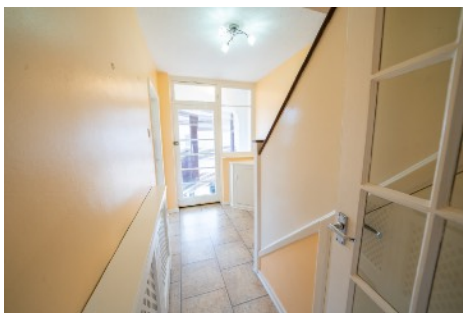
sales@weldonhomes.co.uk

07720 311451

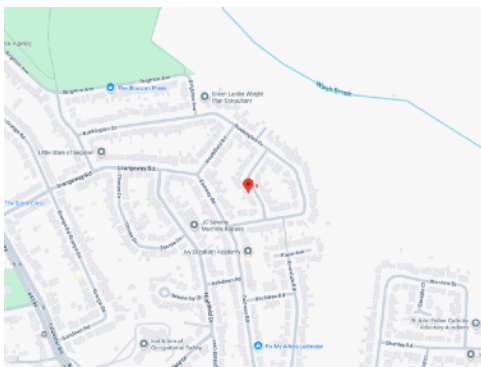
www.weldonhomes.co.uk



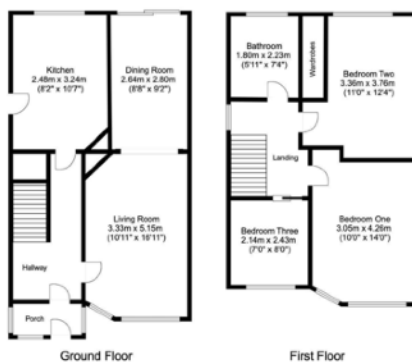
WELDON HOMES
YOUR TRULY INDEPENDENT ESTATE AGENT



LOCATION



FLOORPLAN



EPC

Score	Energy rating	Current	Potential
92+	A		
81-91	B		81 B
69-80	C		
55-68	D	64 D	
39-54	E		
21-38	F		
1-20	G		

CONTACT US NOW

sales@weldonhomes.co.uk

07720 311451

www.weldonhomes.co.uk

—
**WE
WON!**



**BRITISH
PROPERTY
AWARDS**

2024



GOLD WINNER

**ESTATE AGENT
IN WIGSTON**

